



# Emphysematous Pyelonephritis

**\*Corresponding Author(s): Murtaza F Dhrolia**

The Kidney Centre Post Graduate Training Institute  
(TKC-PGTI), Karachi, Pakistan.

Tel: +92-300-238-8191, Fax: +92-213-566-1040;

Email: mfdhrolia@hotmail.com

Received: Nov 04, 2020

Accepted: Dec 15, 2020

Published Online: Dec 18, 2020

Journal: Journal of Clinical Images

Publisher: MedDocs Publishers LLC

Online edition: <http://meddocsonline.org/>

Copyright: © Dhrolia MF (2020). *This Article is distributed under the terms of Creative Commons Attribution 4.0 International License*

## Clinical image description

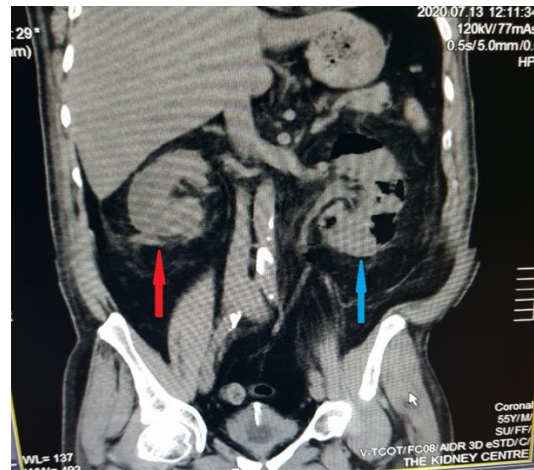
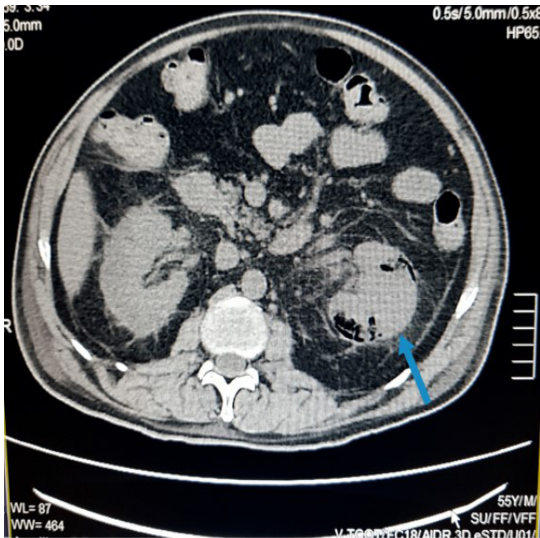
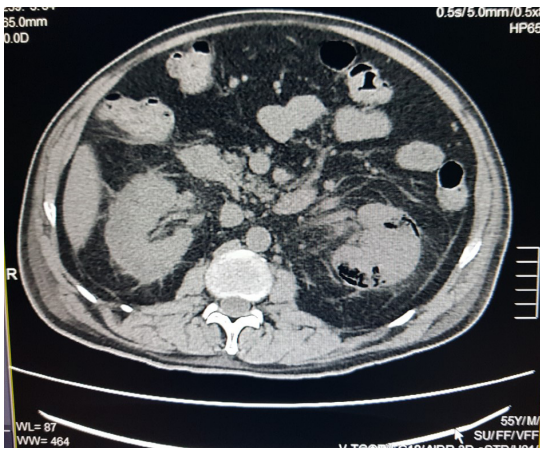
A 55-year-old gentleman, psychiatrist by profession, presented with burning micturition, decrease in urine output and generalized weakness of 1-week duration. There was no associated fever or flank pain. He had diabetes and hypertension for last 15 years and had history of urinary tract infection one-year back. Imaging studies revealed gas collection in the renal parenchyma, and gas and fluid collection in perinephric space of the left kidney.

He underwent left nephrectomy for emphysematous pyelonephritis and now has become end stage renal disease and is on maintenance hemodialysis three times per week.



X-Ray KUB shows left kidney outlined by air (red arrow)





Axial CT image shows multiple speckles of air in left kidney with perinephric fat stranding. (Blue arrow)

Coronal CT image shows subcapsular fluid collection in the right kidney with perirenal fat stranding (red arrow) and multiple speckles of air in left kidney with perinephric fat stranding (blue arrow)